



LENTORIA

**Huttons**  
SINGAPORE'S LARGEST  
PRIVATE REAL ESTATE AGENCY

# FLOOR PLAN & AVAILABLE PRICES



## Disclaimer:

The contents of the presentation and materials used are for internal circulation and use only. Circulation to other parties are strictly prohibited. While Huttons has endeavoured to ensure that the information and materials contained herein are accurate and up to date as at **18<sup>th</sup> Aug 2024**, Huttons is not responsible for any errors or omissions, or for the results obtained from their use or the reliance placed on them. All information is provided "as is", with no guarantee of completeness, and accuracy. In no event will Huttons and/or salespersons thereof be liable in contract or in tort, to any party for any decision made or action taken in reliance on the information in this presentation/document or for any direct, indirect, consequential, special or similar damages.





## SITE PLAN

### Level 1

#### The Oasis

- 50m Lap Swimming Pool
- Kid's Wading Pool
- Shallow Pool Lounge
- Hydrotherapy Spa
- BBQ Pavilion 1
- BBQ Pavilion 2
- Cabana & Sun Deck

#### Botanical Collection

- Fernery
- Palm Grove
- Jogging/Walking Trail
- Orchid Collection

#### Waterfalls

- Grand Arrival
- Water Feature & Green Wall
- Entrance Palm Garden
- Biophilic Waiting Area

#### Forest Playscape

- Maze Garden
- Forest Pavilion
- Water Pavilion
- Fitness Station
- Forest Fitness
- Nature Play
- Bowling Lawn
- Dog Run
- Garden Lawn
- Whimsical Garden

#### Clubhouse

- Garden Lounge
- Forest Lounge

### Level 2

#### Clubhouse

- Gymnasium
- Yoga Studio
- Clubhouse Garden

### Others

- A: Guardhouse (B1)
- B: Side Gate (B1)
- C: Side Gate (L1)
- D: Bin Centre (B2)
- E: Substation (B2)
- F: Genset (B2)
- VS: Ventilation Shaft
- Water Tank
- Solar Panels

1 Brm (538 sf)
2 Brm (700 sf & 732 sf)
2 Brm Study (732 sf)
3 Brm (915 sf, 936 sf, 958 sf)
3 Brm Premium (1119 sf)
4 Brm (1206 sqft)
4 Brm Premium (1345 sqft)

## 1 Bedroom Premium

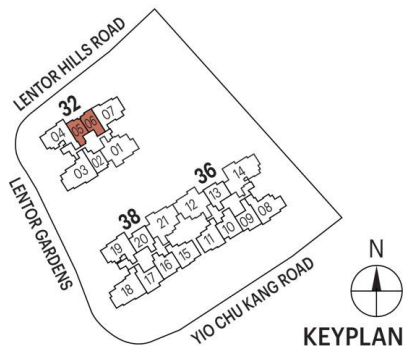
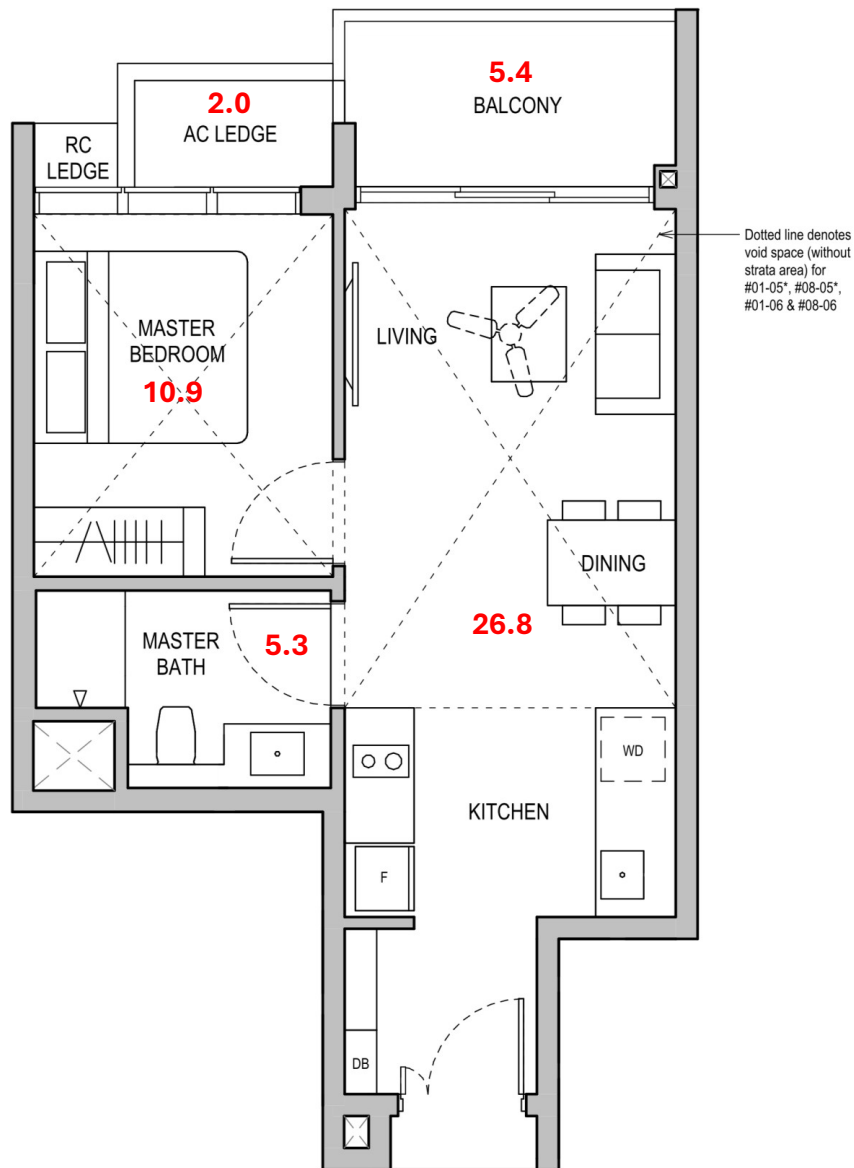
### Type A1

50 sqm / 538 sqft

#### Block 32

#02-05\* to #08-05\*

#02-06 to #08-06



5	6
<b>1 BR</b>	<b>1 BR</b>
<b>A1</b>	<b>A1</b>
<b>538sf</b>	<b>538sf</b>
<b>50sm</b>	<b>50sm</b>
#08-05	#08-06
#07-05	#07-06
<b>\$1,273,000</b>	<b>SOLD</b>
\$2366 psf	
#06-05	#06-06
<b>SOLD</b>	<b>SOLD</b>
#05-05	#05-06
<b>SOLD</b>	<b>SOLD</b>
#04-05	#04-06
<b>SOLD</b>	<b>SOLD</b>
#03-05	#03-06
<b>SOLD</b>	<b>SOLD</b>
#02-05	#02-06
<b>SOLD</b>	<b>SOLD</b>
#01-05	#01-06

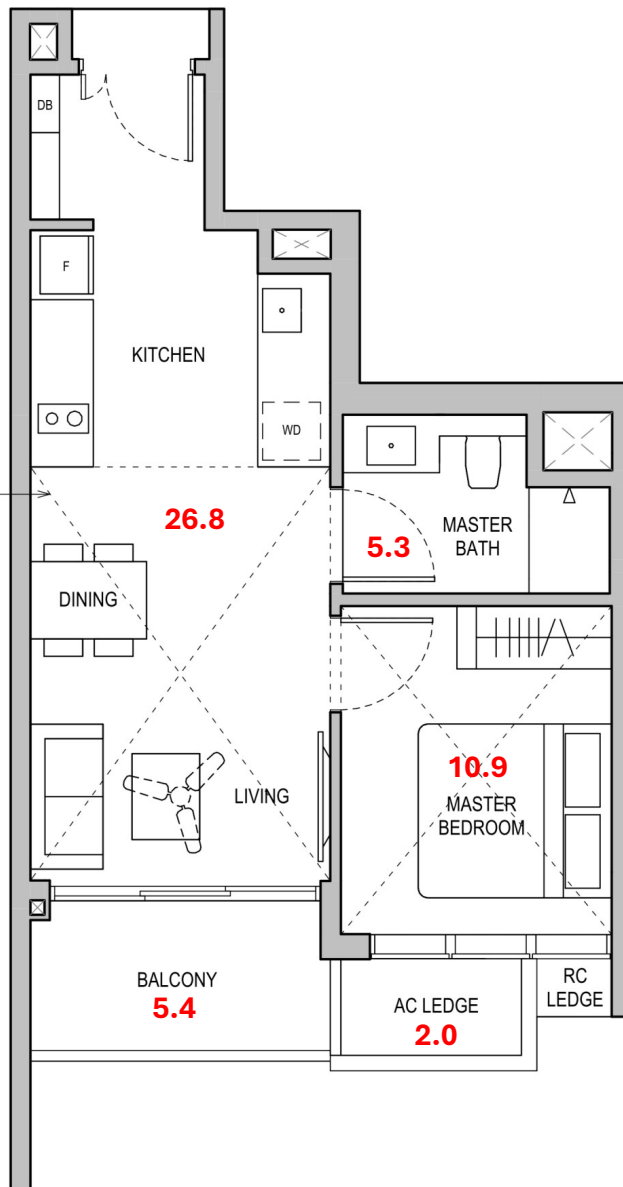
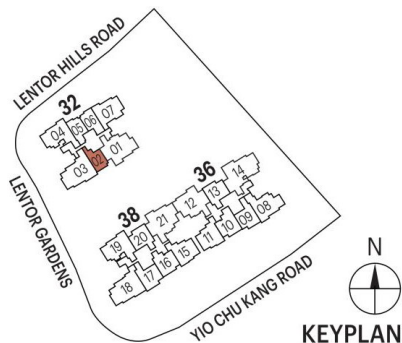


## 1 Bedroom Premium

### Type A2 50 sqm / 538 sqft

**Block 32**  
#02-02 to #08-02

Dotted line denotes  
void space (without  
strata area) for #08-02



2
1 BR
A2
538sf
50sm
#08-02
#07-02
\$1,327,000
\$2467 psf
#06-02
\$1,320,000
\$2454 psf
#05-02
\$1,313,000
\$2441 psf
#04-02
\$1,306,000
\$2428 psf
#03-02
\$1,299,000
\$2414 psf
#02-02
\$1,292,000
\$2401 psf

### Type B1

65 sqm / 700 sqft

#### Block 36

#02-13\* to #13-13\*

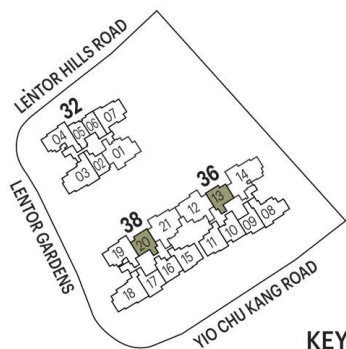
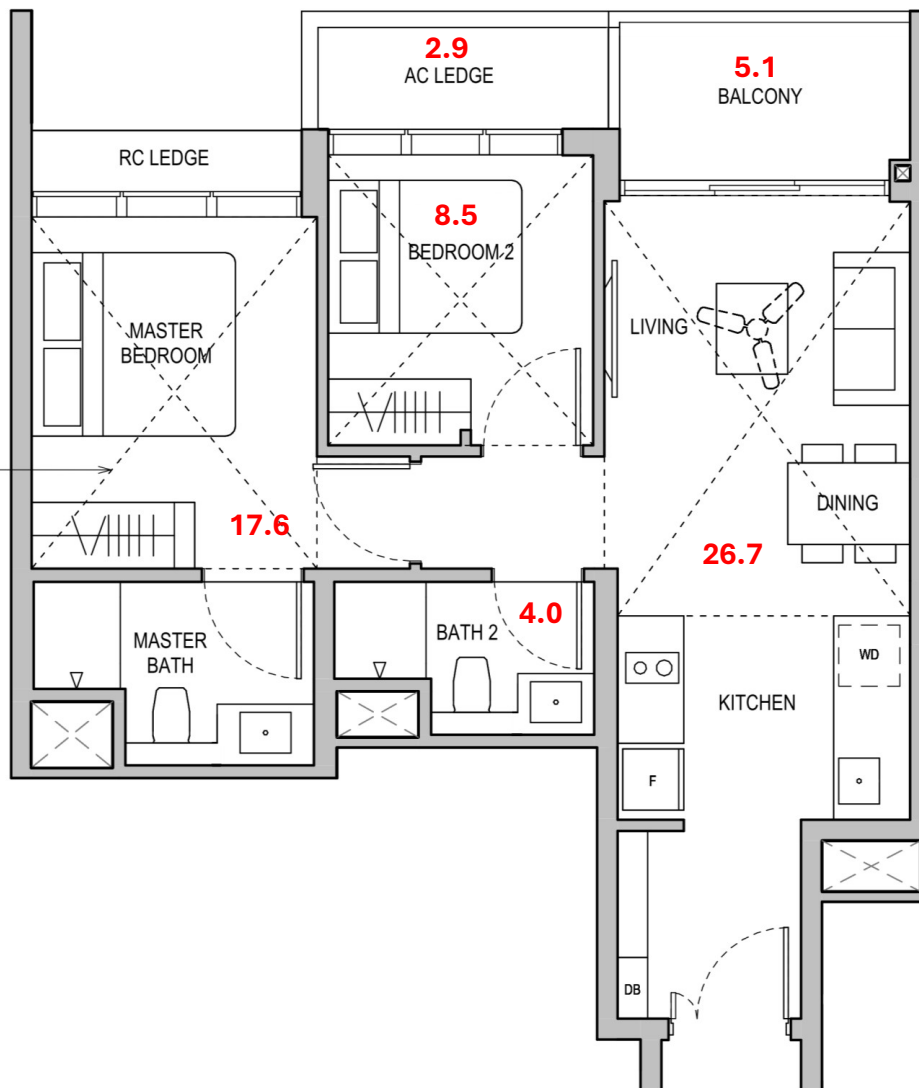
#15-13\* to #17-13\*

#### Block 38

#02-20 to #13-20

#15-20 to #17-20

Dotted line denotes  
void space (without  
strata area) for  
#01-13\*, #17-13\*,  
#01-20 & #17-20.



13	20
2 BR	2 BR
B1	B1
700sf	700sf
65sm	65sm
#17-13	#17-20
\$0 psf	\$0 psf
#16-13	#16-20
\$1,699,000	\$1,694,000
\$2427 psf	\$2420 psf
#15-13	#15-20
\$1,694,000	\$1,687,000
\$2420 psf	\$2410 psf
#13-13	#13-20
SOLD	\$1,636,000
	\$2337 psf
#12-13	#12-20
SOLD	\$1,629,000
	\$2327 psf
#11-13	#11-20
SOLD	\$1,622,000
	\$2317 psf
#10-13	#10-20
SOLD	SOLD
#09-13	#09-20
SOLD	SOLD
#08-13	#08-20
SOLD	SOLD
#07-13	#07-20
SOLD	SOLD
#06-13	#06-20
SOLD	SOLD
#05-13	#05-20
SOLD	SOLD
#04-13	#04-20
SOLD	SOLD
#03-13	#03-20
SOLD	SOLD
#02-13	#02-20
SOLD	SOLD
#01-13	#01-20
SOLD	\$1,780,000
	\$2543 psf

2 Bedroom

## Type B2 68 sqm / 732 sqft

### Block 36

#02-09\* to #13-09\*

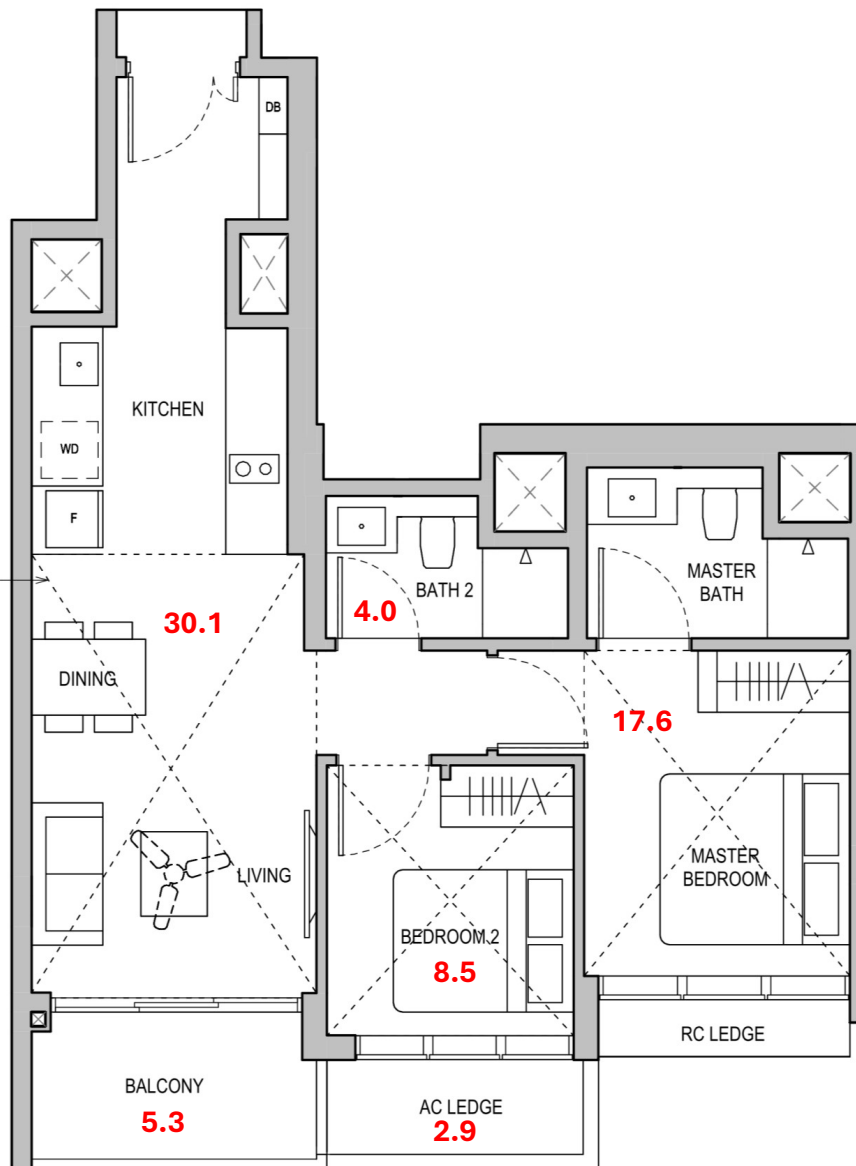
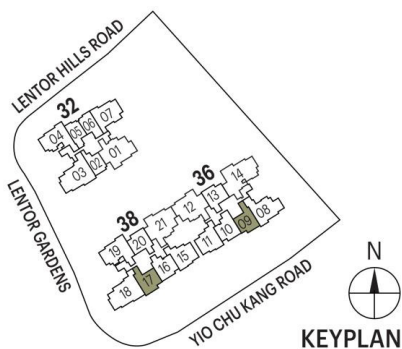
#15-09\* to #17-09\*

### Block 38

#02-17 to #13-17

#15-17 to #17-17

Dotted line denotes  
void space (without  
strata area) for  
#01-09\*, #17-09\*,  
#01-17 & #17-17



9	17
2 BR	2 BR
B2	B2
732sf	732sf
68sm	68sm
#17-09	#17-17
#16-09	#16-17
\$1,675,000	\$1,647,000
\$2288 psf	\$2250 psf
#15-09	#15-17
\$1,668,000	\$1,640,000
\$2279 psf	\$2240 psf
#13-09	#13-17
SOLD	SOLD
#12-09	#12-17
\$1,602,000	SOLD
\$2189 psf	
#11-09	#11-17
SOLD	SOLD
#10-09	#10-17
SOLD	SOLD
#09-09	#09-17
SOLD	SOLD
#08-09	#08-17
SOLD	SOLD
#07-09	#07-17
SOLD	SOLD
#06-09	#06-17
SOLD	SOLD
#05-09	#05-17
SOLD	SOLD
#04-09	#04-17
SOLD	SOLD
#03-09	#03-17
SOLD	SOLD
#02-09	#02-17
SOLD	SOLD
#01-09	#01-17
	\$1,730,000
	\$2363 psf

2 Bedroom

## Type B3 68 sqm / 732 sqft

### Block 36

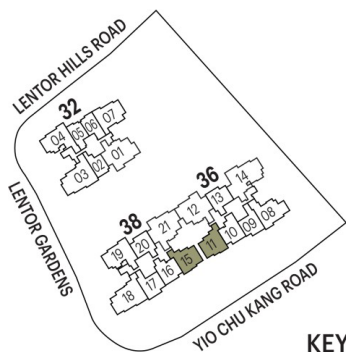
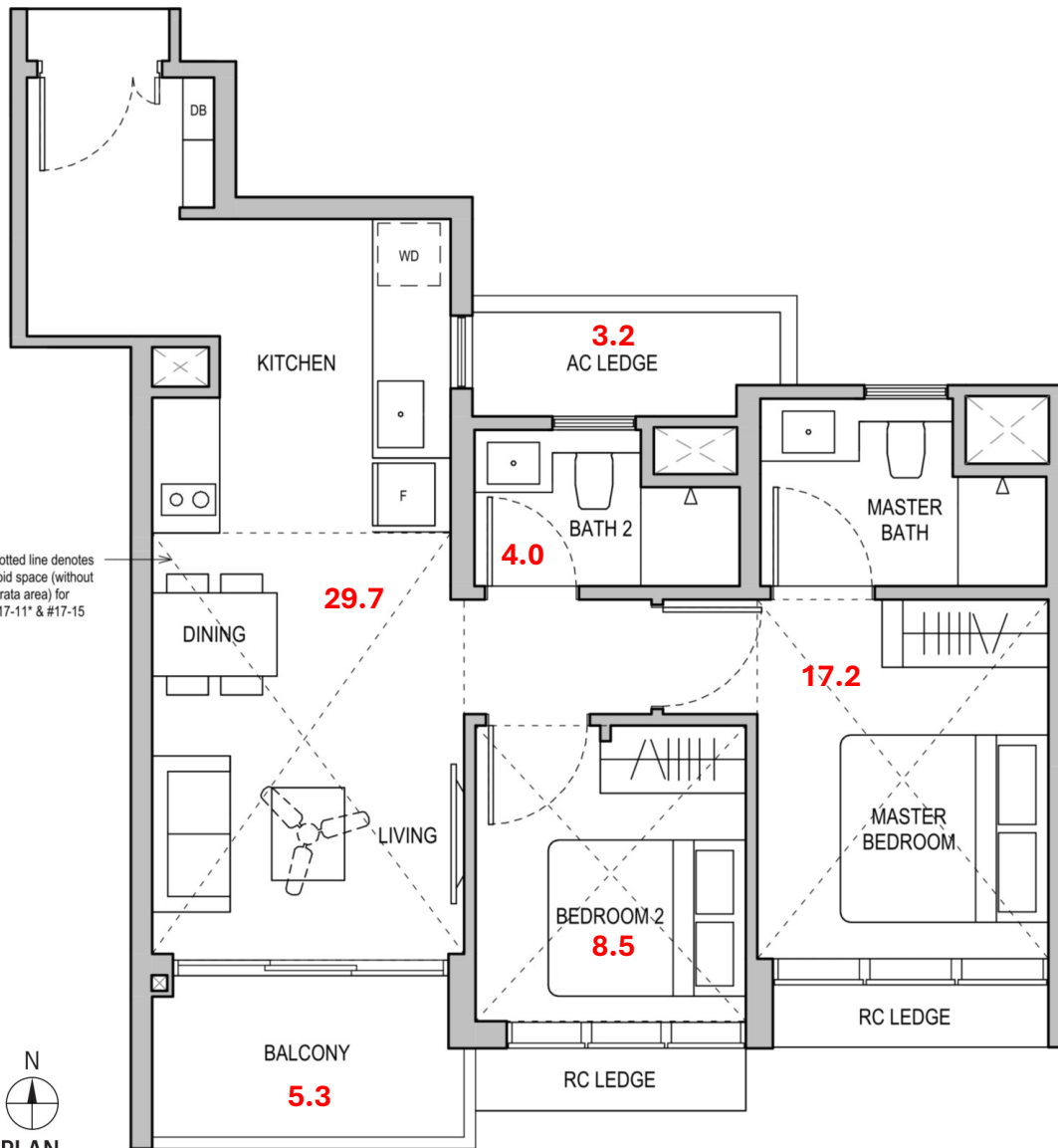
#03-11\* to #13-11\*

#15-11\* to #17-11\*

### Block 38

#03-15 to #13-15

#15-15 to #17-15



11	15
2 BR	2 BR
B3	B3
732sf	732sf
68sm	68sm
#17-11	#17-15
#16-11	#16-15
\$1,717,000	\$1,717,000
\$2346 psf	\$2346 psf
#15-11	#15-15
SOLD	\$1,710,000
	\$2336 psf
#13-11	#13-15
\$1,651,000	\$1,651,000
\$2255 psf	\$2255 psf
#12-11	#12-15
\$1,644,000	SOLD
\$2246 psf	
#11-11	#11-15
SOLD	\$1,626,000
	\$2221 psf
#10-11	#10-15
SOLD	SOLD
#09-11	#09-15
SOLD	SOLD
#08-11	#08-15
SOLD	SOLD
#07-11	#07-15
SOLD	SOLD
#06-11	#06-15
SOLD	SOLD
#05-11	#05-15
SOLD	SOLD
#04-11	#04-15
\$1,562,000	\$1,562,000
\$2134 psf	\$2134 psf
#03-11	#03-15
SOLD	\$1,555,000
	\$2124 psf

2 Bedroom + Study

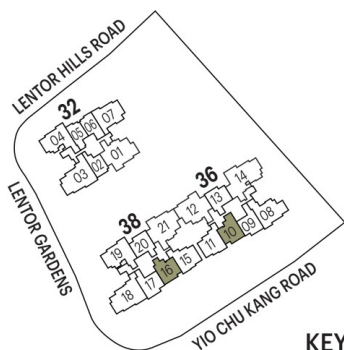
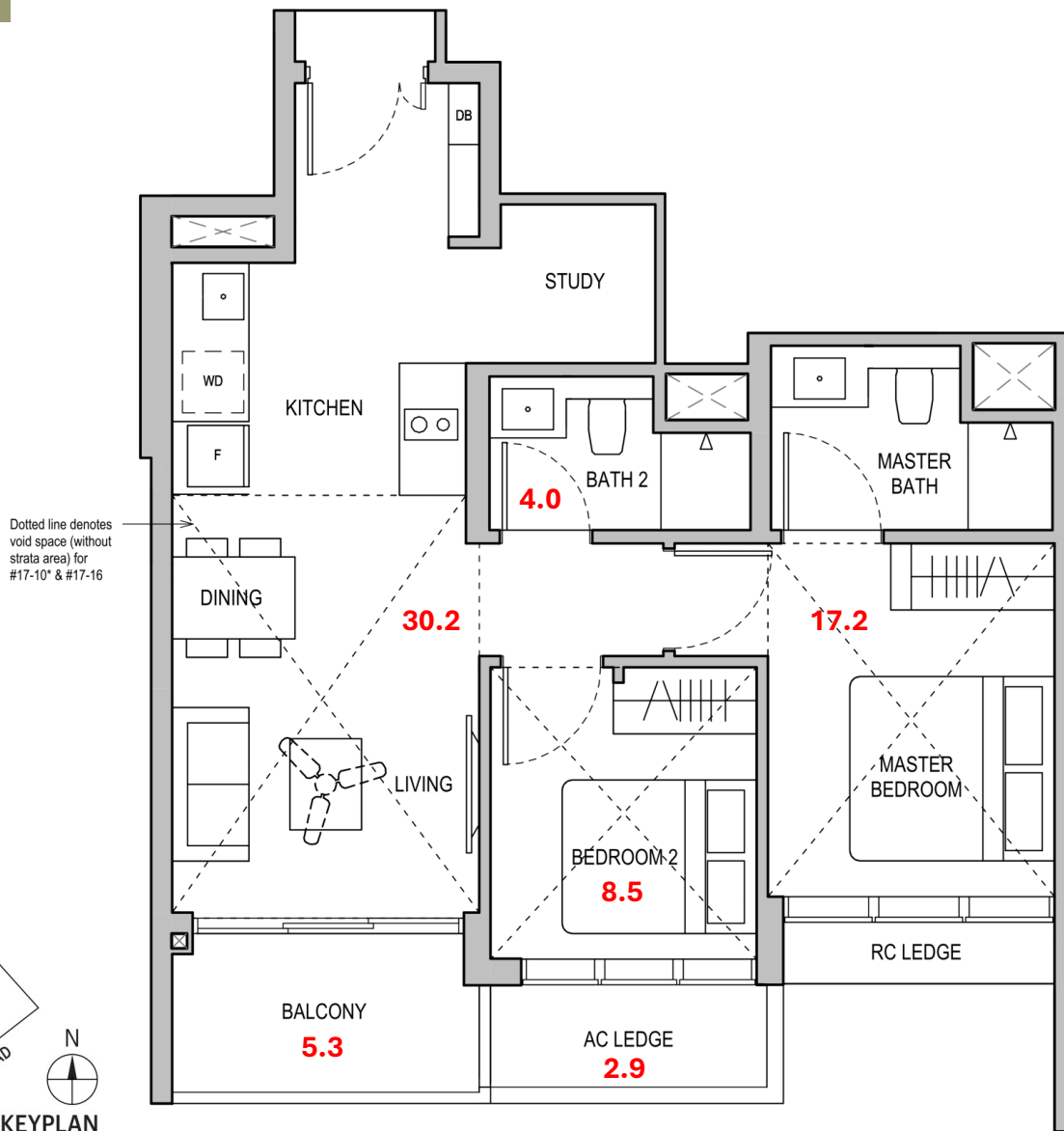
## Type B4S 68 sqm / 732 sqft

### Block 36

#03-10\* to #13-10\*  
#15-10\* to #17-10\*

### Block 38

#03-16 to #13-16  
#15-16 to #17-16



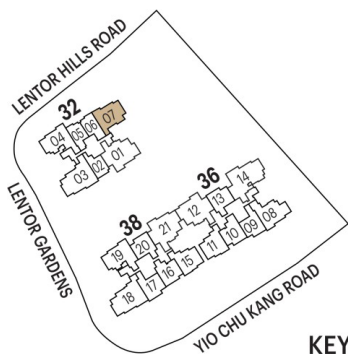
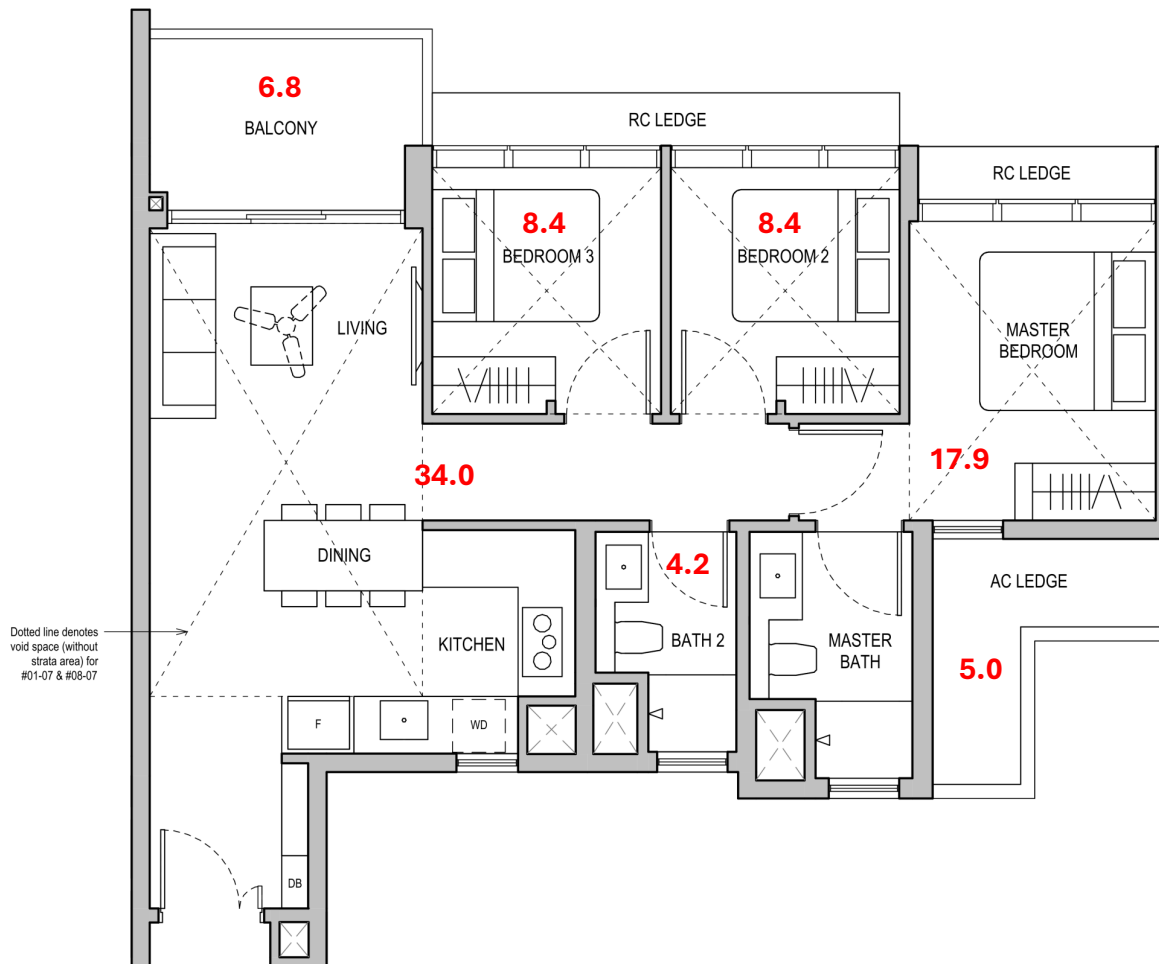
10	16
2 BR+S	2 BR+S
B4S	B4S
732sf	732sf
68sm	68sm
#17-10	#17-16
#16-10	#16-16
\$1,759,000 \$2403 psf	\$1,757,000 \$2400 psf
#15-10	#15-16
\$1,752,000 \$2393 psf	\$1,750,000 \$2391 psf
#13-10	#13-16
\$1,693,000 \$2313 psf	\$1,691,000 \$2310 psf
#12-10	#12-16
\$1,686,000 \$2303 psf	SOLD
#11-10	#11-16
SOLD	\$1,666,000 \$2276 psf
#10-10	#10-16
SOLD	SOLD
#09-10	#09-16
SOLD	\$1,637,000 \$2236 psf
#08-10	#08-16
SOLD	\$1,630,000 \$2227 psf
#07-10	#07-16
SOLD	SOLD
#06-10	#06-16
SOLD	\$1,616,000 \$2208 psf
#05-10	#05-16
SOLD	SOLD
#04-10	#04-16
SOLD	SOLD
#03-10	#03-16
SOLD	SOLD



3 Bedroom

**Type C1**  
85 sqm / 915 sqft

**Block 32**  
#02-07 to #08-07

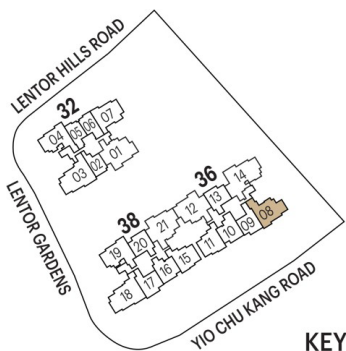
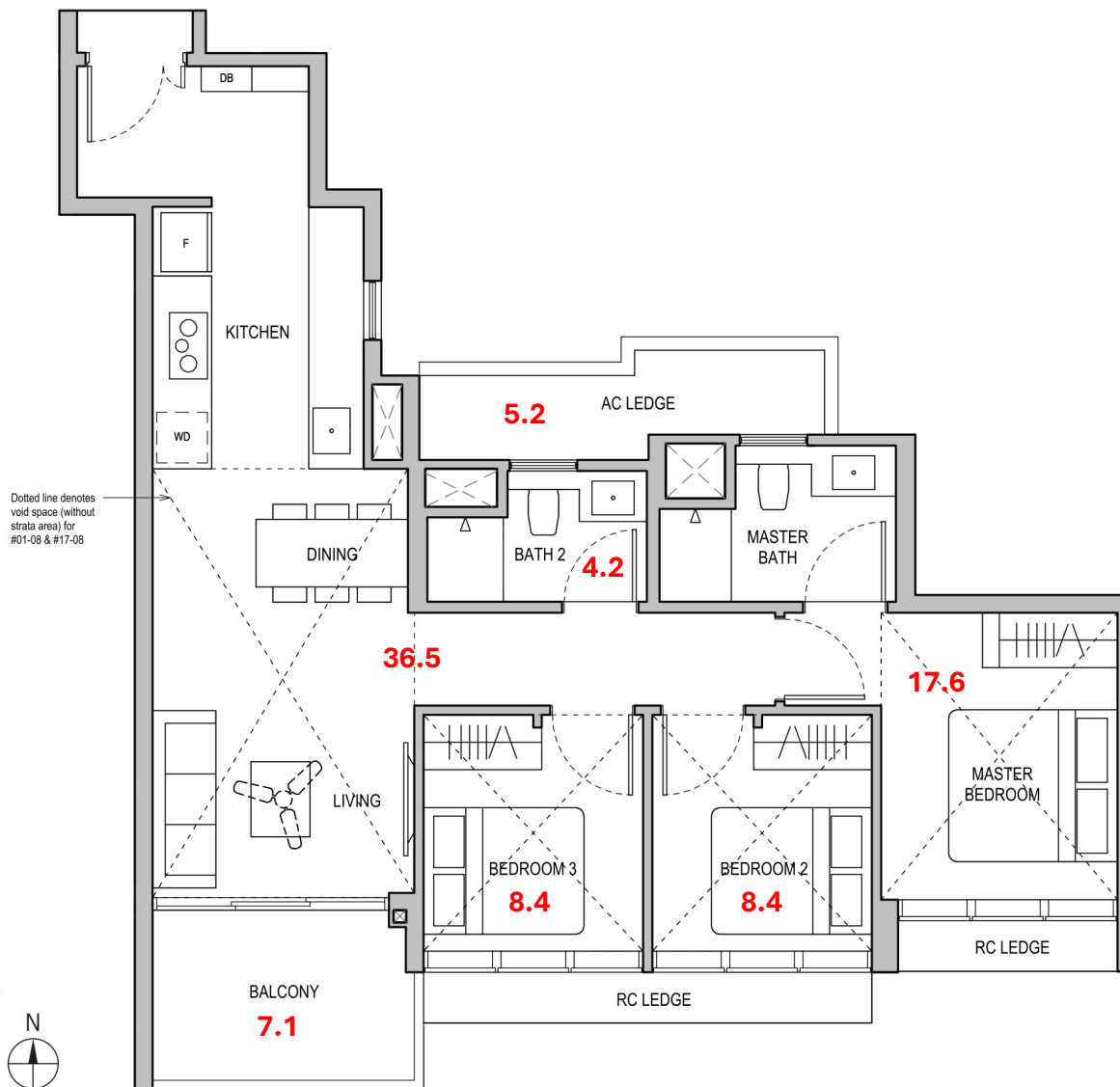


7
3 BR
C1
915sf
85sm
#08-07
#07-07
SOLD
#06-07
SOLD
#05-07
SOLD
#04-07
SOLD
#03-07
SOLD
#02-07
SOLD
#01-07
\$2,260,000
\$2470 psf

3 Bedroom

**Type C2**  
87 sqm / 936 sqft

**Block 36**  
#02-08 to #13-08  
#15-08 to #17-08



8
3 BR
C2
936sf
87sm
#17-08
#16-08
SOLD
#15-08
\$2,119,000
\$2264 psf
#13-08
SOLD
#12-08
SOLD
#11-08
SOLD
#10-08
SOLD
#09-08
SOLD
#08-08
SOLD
#07-08
SOLD
#06-08
SOLD
#05-08
SOLD
#04-08
SOLD
#03-08
SOLD
#02-08
SOLD
#01-08
\$2,220,000
\$2372 psf

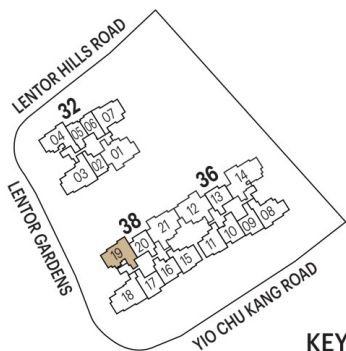
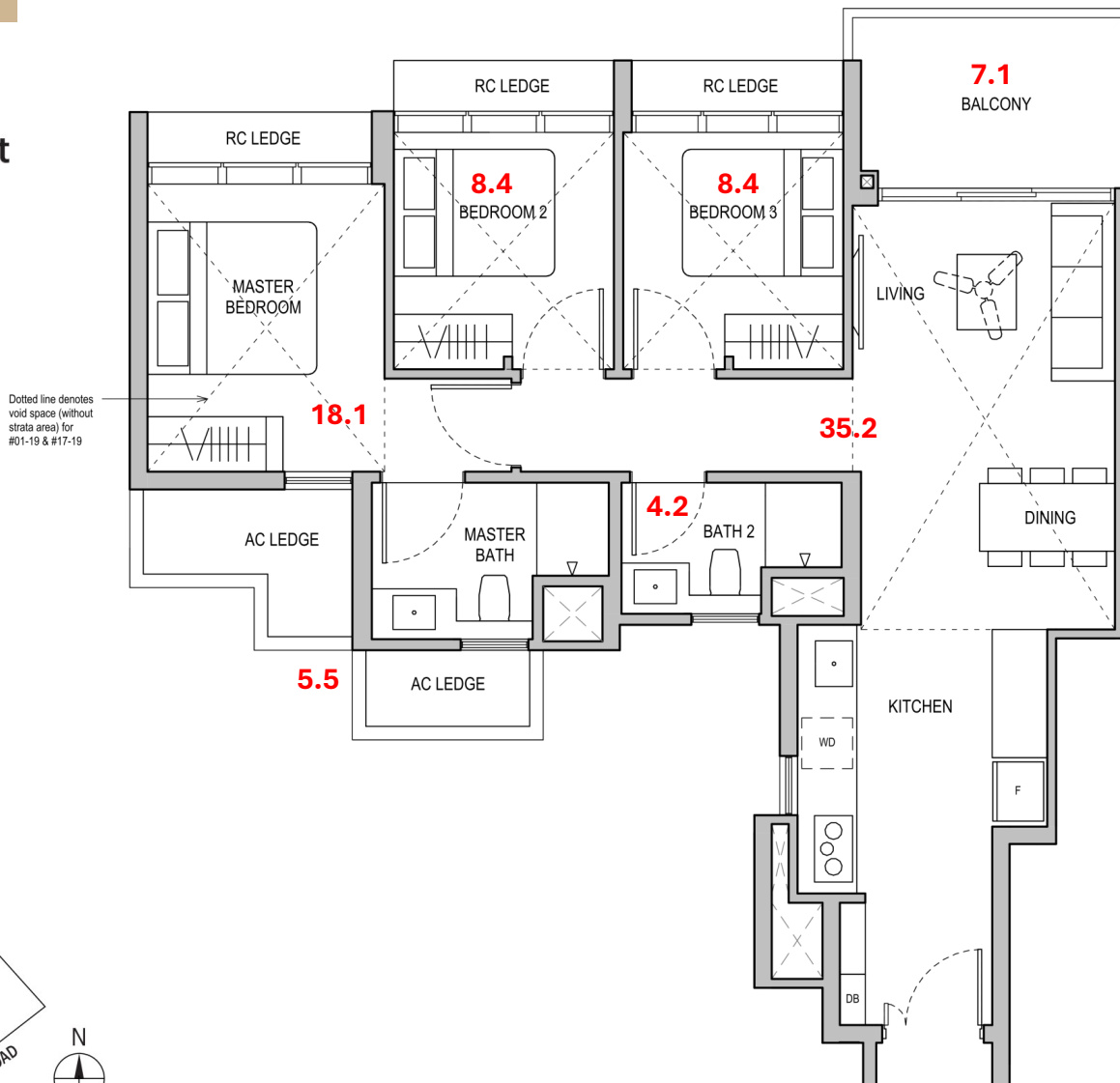
3 Bedroom

## Type C3 87 sqm / 936 sqft

**Block 38**

#02-19 to #13-19

#15-19 to #17-19



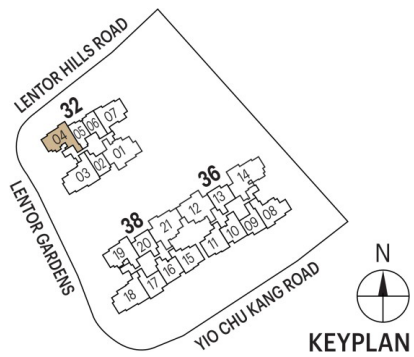
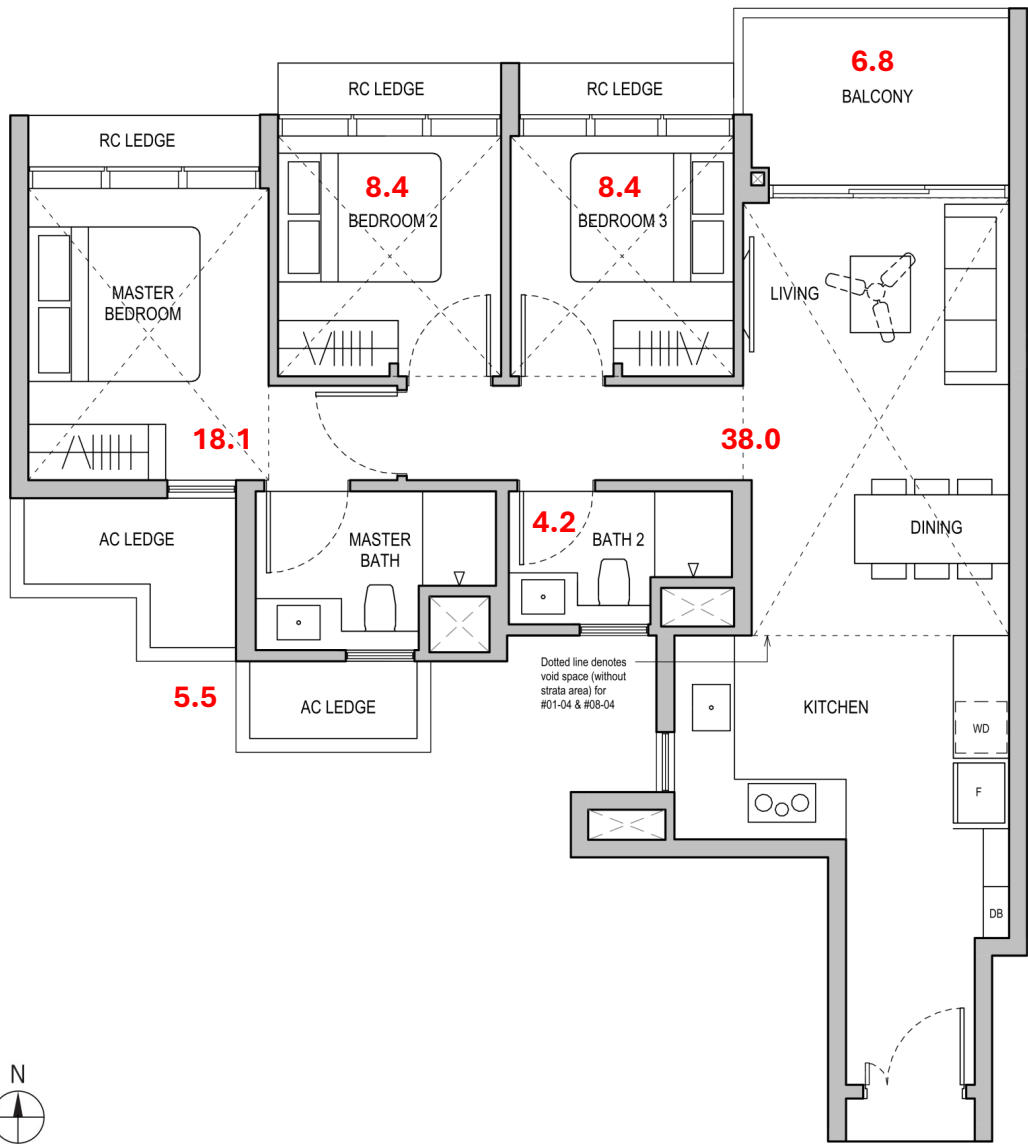
19
3 BR
C3
936sf
87sm
#17-19
#16-19
\$2,360,000
\$2521 psf
#15-19
\$2,350,000
\$2511 psf
#13-19
\$2,275,000
\$2431 psf
#12-19
\$2,265,000
\$2420 psf
#11-19
\$2,255,000
\$2409 psf
#10-19
\$2,206,000
\$2357 psf
#09-19
\$2,178,000
\$2327 psf
#08-19
\$2,168,000
\$2316 psf
#07-19
\$2,158,000
\$2306 psf
#06-19
\$2,148,000
\$2295 psf
#05-19
\$2,138,000
\$2284 psf
#04-19
\$2,128,000
\$2274 psf
#03-19
\$2,118,000
\$2263 psf
#02-19
\$2,108,000
\$2252 psf
#01-19



3 Bedroom

**Type C4**  
89 sqm / 958 sqft

**Block 32**  
#02-04 to #08-04



4
3 BR
C4
958sf
89sm
#08-04
#07-04
SOLD
#06-04
SOLD
#05-04
\$2,018,000
\$2106 psf
#04-04
\$2,008,000
\$2096 psf
#03-04
\$1,998,000
\$2086 psf
#02-04
\$1,988,000
\$2075 psf
#01-04

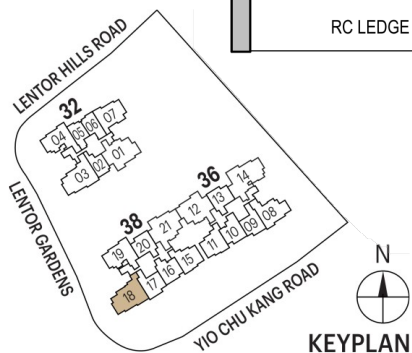
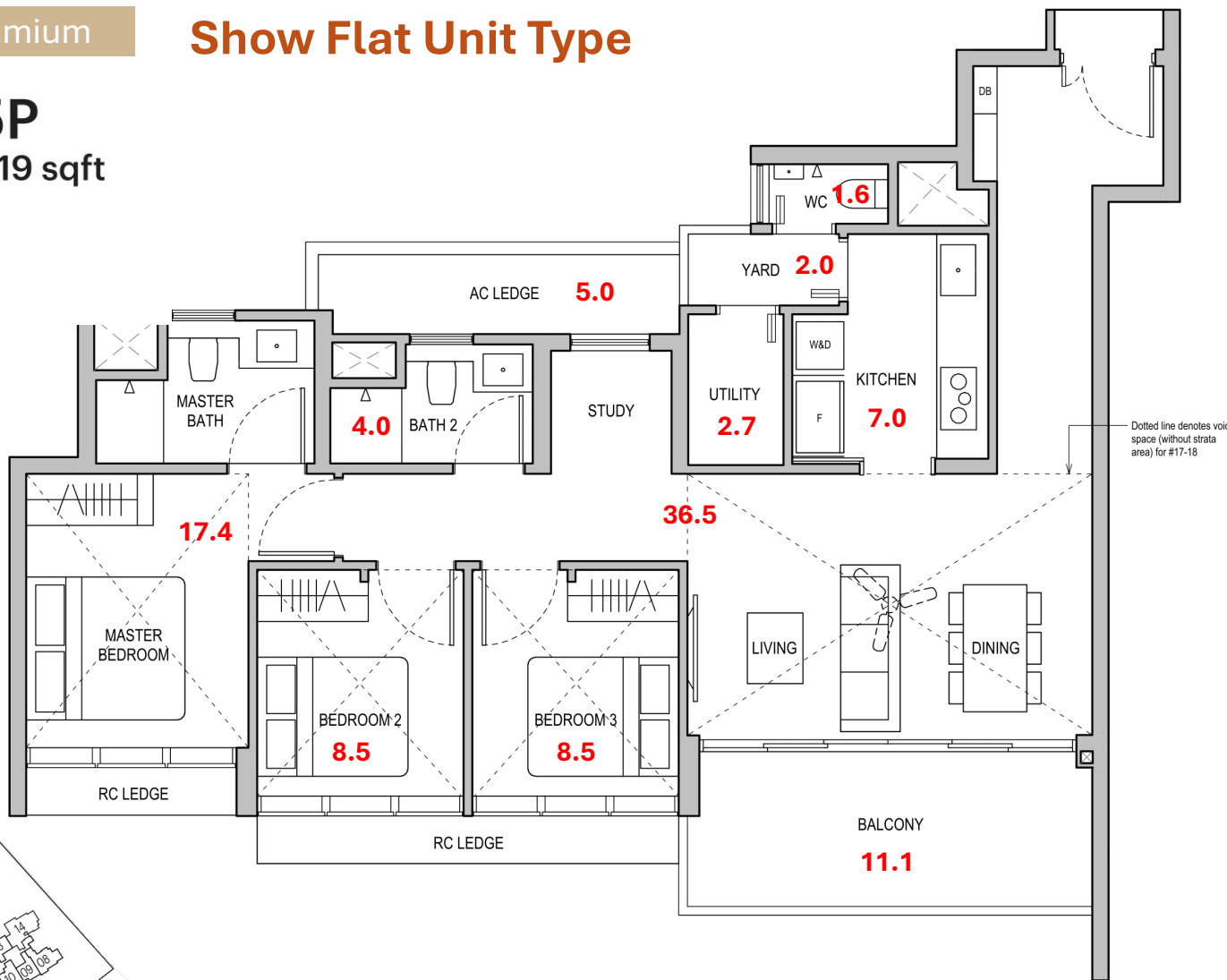
### Type C5P

104 sqm / 1,119 sqft

#### Block 38

#03-18 to #13-18

#15-18 to #17-18

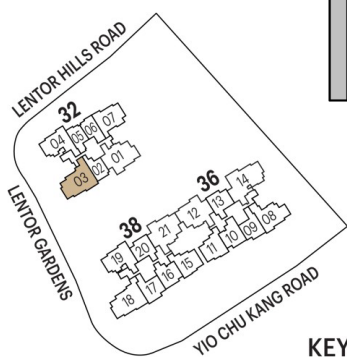
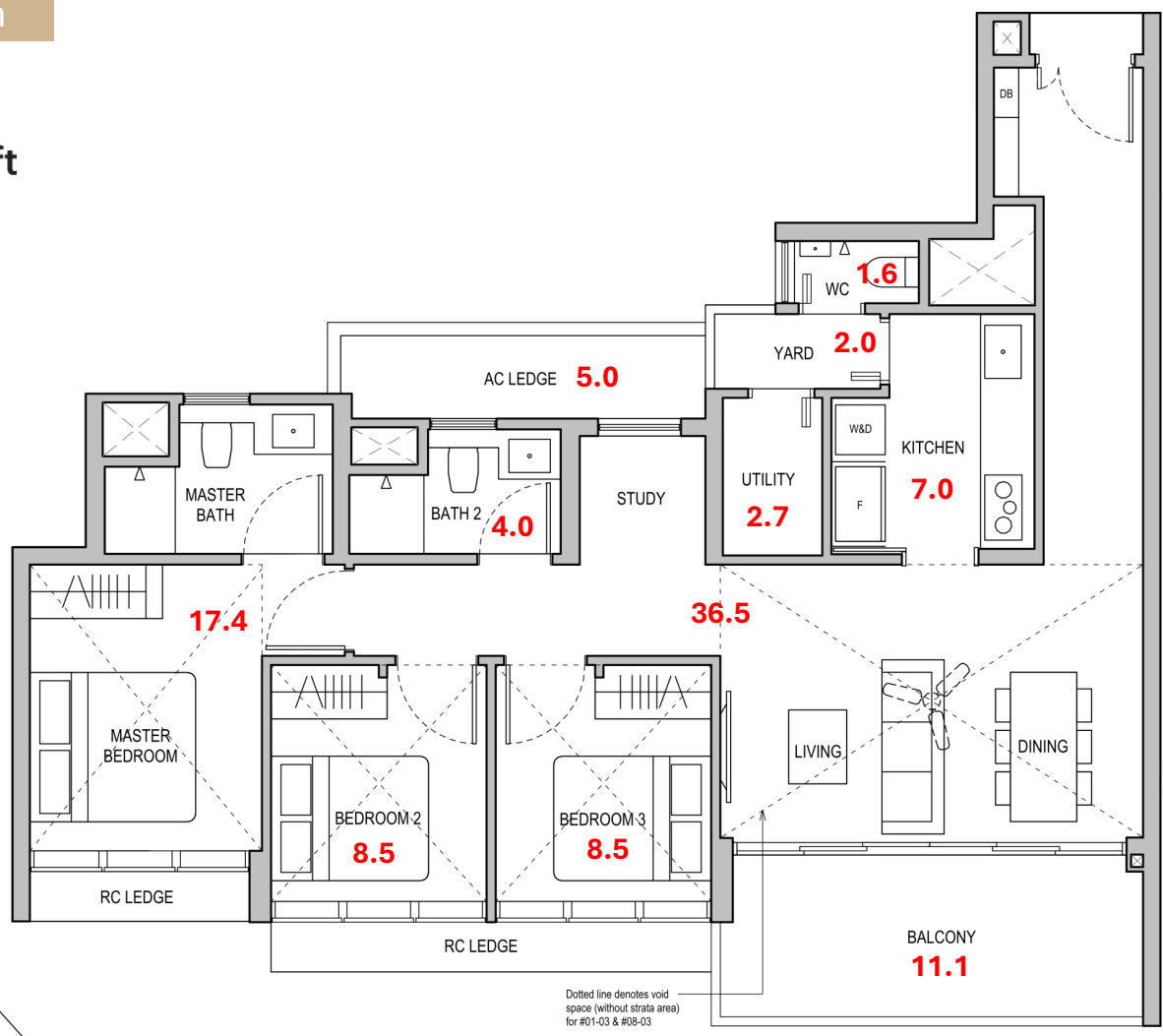


18
3 BRP
C5P
1119sf
104sm
#17-18
#16-18
SOLD
#15-18
SOLD
#13-18
\$2,451,000
\$2190 psf
#12-18
SOLD
#11-18
SOLD
#10-18
SOLD
#09-18
SOLD
#08-18
SOLD
#07-18
SOLD
#06-18
SOLD
#05-18
SOLD
#04-18
SOLD
#03-18
SOLD

## 3 Bedroom Premium

### Type C6P 104 sqm / 1,119 sqft

**Block 32**  
#02-03 to #08-03



3
3 BRP
C6P
1119sf
104sm
#08-03
#07-03
\$2,523,000
\$2255 psf
#06-03
\$2,512,000
\$2245 psf
#05-03
\$2,501,000
\$2235 psf
#04-03
\$2,490,000
\$2225 psf
#03-03
\$2,479,000
\$2215 psf
#02-03
\$2,468,000
\$2206 psf
#01-03



### Type D1

112 sqm / 1,206 sqft

#### Block 36

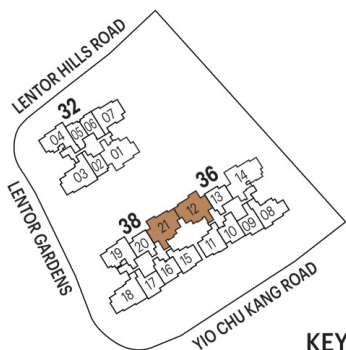
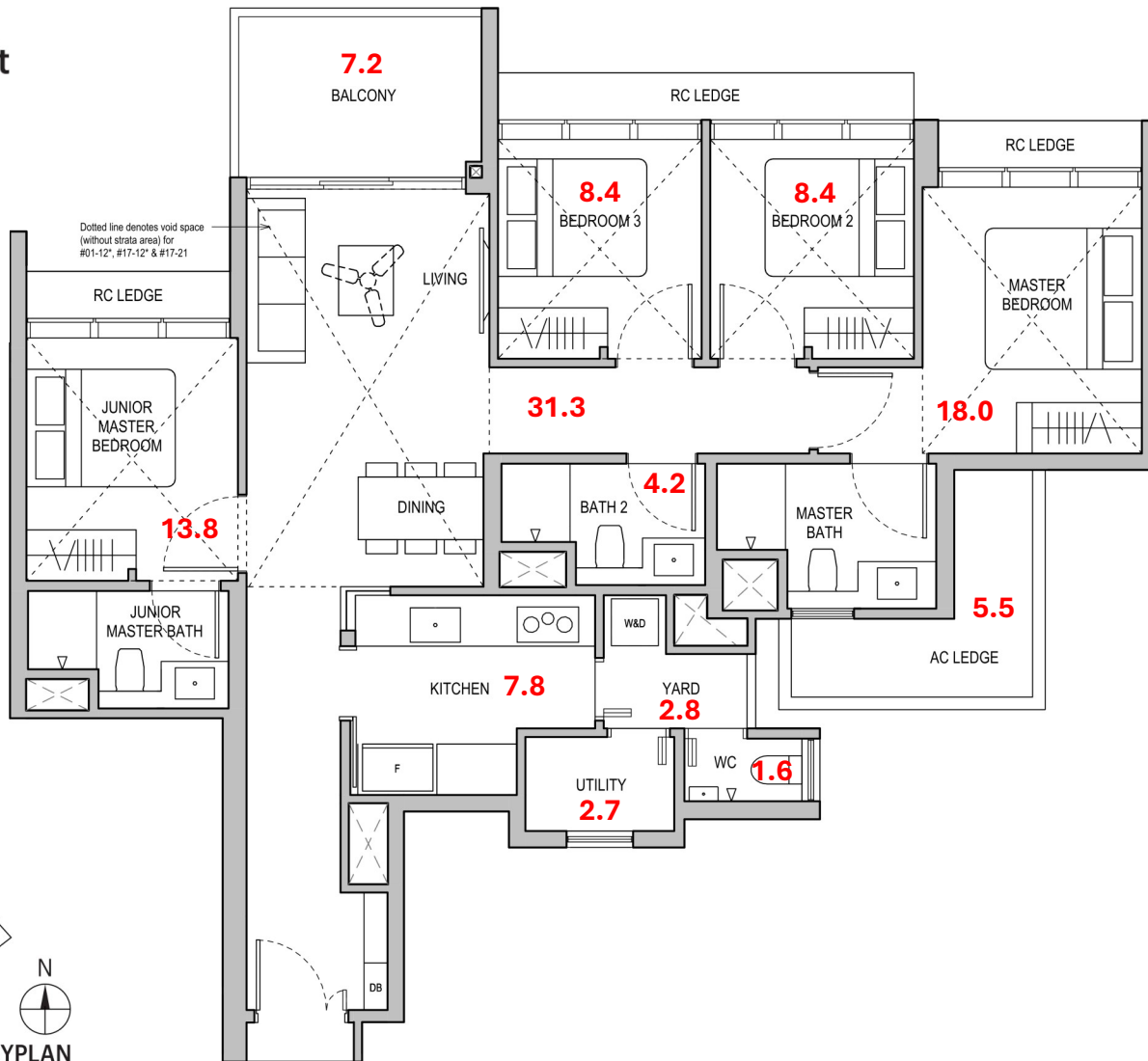
#02-12\* to #13-12\*

#15-12\* to #17-12\*

#### Block 38

#03-21 to #13-21

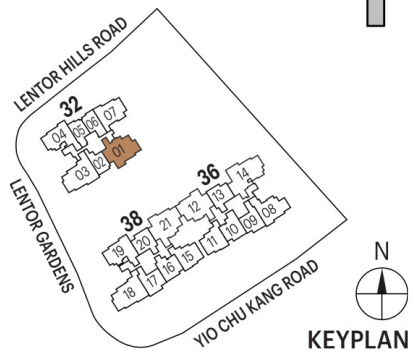
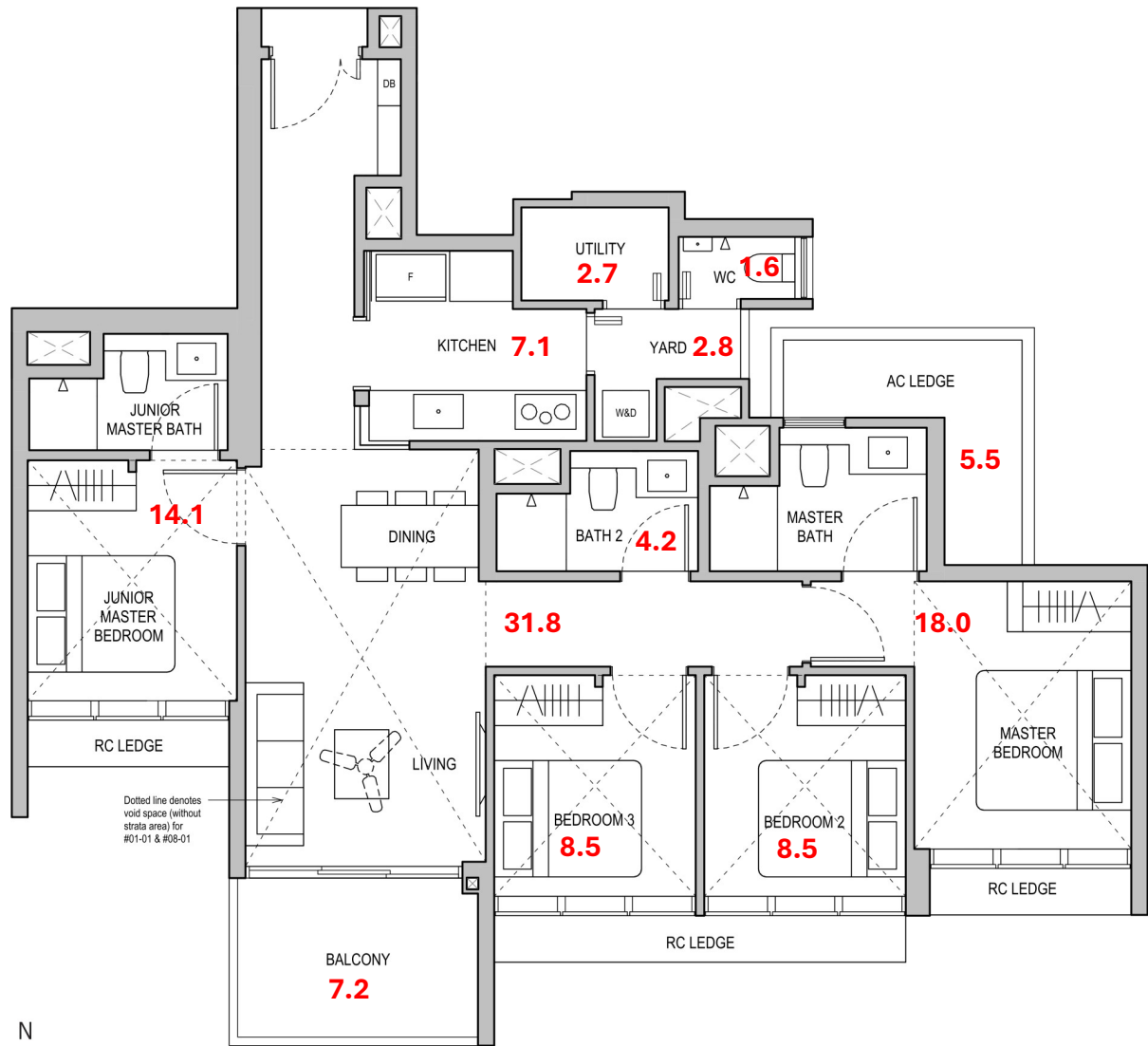
#15-21 to #17-21



12	21
4 BR	4 BR
D1	D1
1206sf	1206sf
112sm	112sm
#17-12	#17-21
#16-12	#16-21
\$2,944,000	\$2,944,000
\$2441 psf	\$2441 psf
#15-12	#15-21
\$2,932,000	\$2,932,000
\$2431 psf	\$2431 psf
#13-12	#13-21
\$2,836,000	\$2,836,000
\$2352 psf	\$2352 psf
#12-12	#12-21
<b>SOLD</b>	\$2,824,000
	\$2342 psf
#11-12	#11-21
\$2,812,000	\$2,812,000
\$2332 psf	\$2332 psf
#10-12	#10-21
\$2,776,000	\$2,775,000
\$2302 psf	\$2301 psf
#09-12	#09-21
\$2,764,000	\$2,740,000
\$2292 psf	\$2272 psf
#08-12	#08-21
\$2,752,000	\$2,728,000
\$2282 psf	\$2262 psf
#07-12	#07-21
\$2,740,000	\$2,716,000
\$2272 psf	\$2252 psf
#06-12	#06-21
\$2,728,000	\$2,704,000
\$2262 psf	\$2242 psf
#05-12	#05-21
\$2,716,000	\$2,692,000
\$2252 psf	\$2232 psf
#04-12	#04-21
\$2,704,000	\$2,680,000
\$2242 psf	\$2222 psf
#03-12	#03-21
\$2,692,000	<b>SOLD</b>
\$2232 psf	
#02-12	
\$2,656,000	
\$2202 psf	
#01-12	

4 Bedroom

**Type D2**  
 112 sqm / 1,206 sqft  
**Block 32**  
 #02-01 to #08-01



1
4 BR
D2
1206sf
112sm
#08-01
#07-01 SOLD
#06-01 SOLD
#05-01 SOLD
#04-01 SOLD
#03-01 SOLD
#02-01 \$2,598,000 \$2154 psf
#01-01

Prices are subject to changes without prior notice, all sizes are estimated only

4 Bedroom

Show Flat Unit

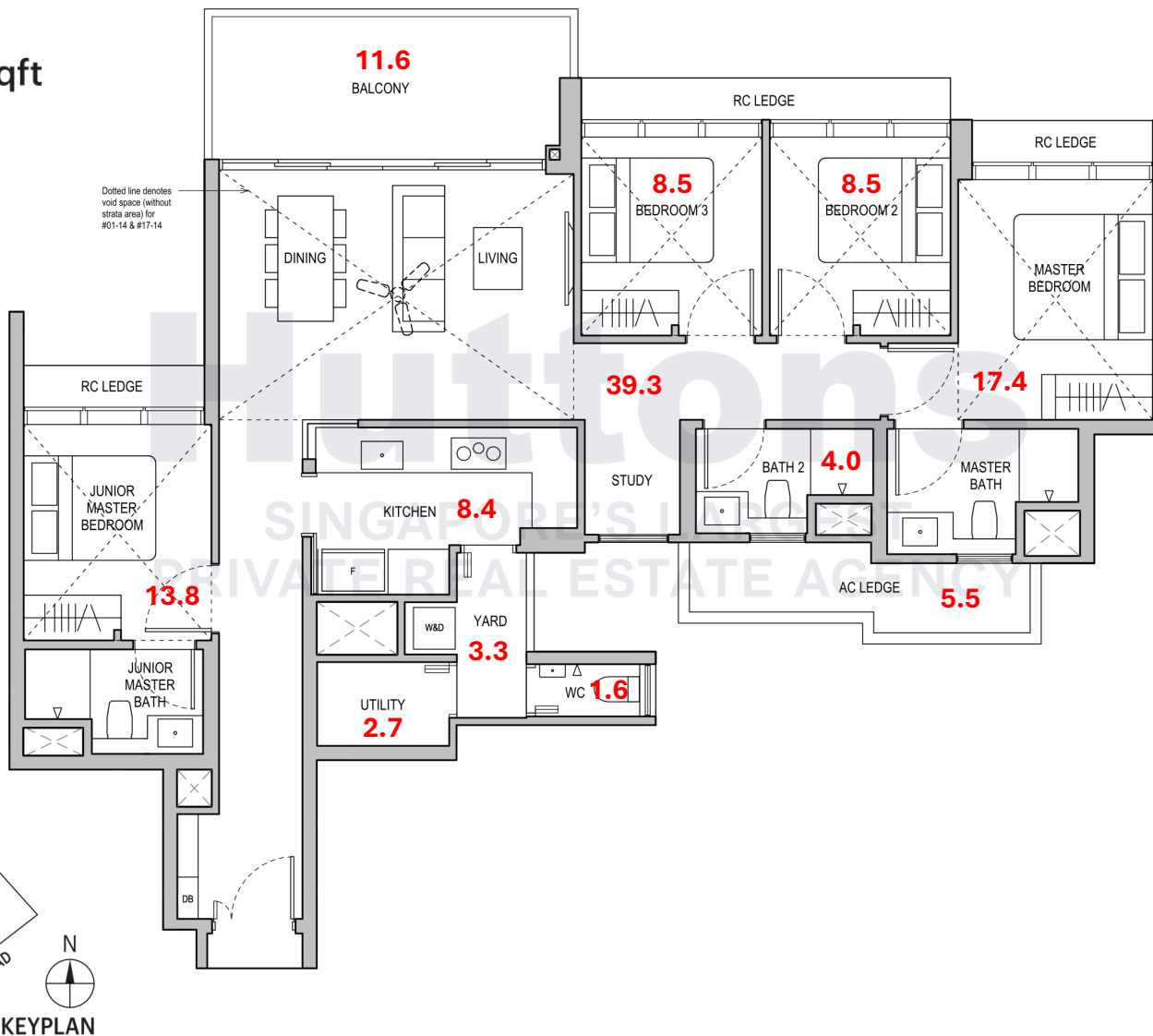
**Type D3P**

125 sqm / 1,345 sqft

**Block 36**

#02-14 to #13-14

#15-14 to #17-14



14
4 BRP
D3P
1345sf
125sm
#17-14
#16-14
SOLD
#15-14
\$3,085,000
\$2294 psf
#13-14
SOLD
#12-14
SOLD
#11-14
\$2,955,000
\$2197 psf
#10-14
SOLD
#09-14
\$2,925,000
\$2175 psf
#08-14
SOLD
#07-14
\$2,895,000
\$2152 psf
#06-14
SOLD
#05-14
\$2,865,000
\$2130 psf
#04-14
\$2,845,000
\$2115 psf
#03-14
\$2,830,000
\$2104 psf
#02-14
\$2,790,000
\$2074 psf
#01-14